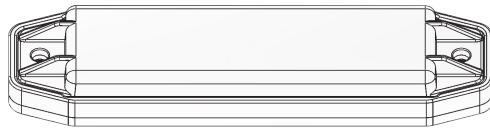


INSTALLATION AND CONFIGURATION MANUAL
 Abrams Ultra Grill Lights



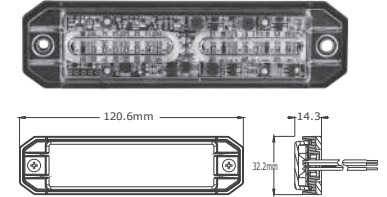
MODEL#: UG-1200

IMPORTANT! PLEASE READ THROUGH ALL PROVIDED INSTRUCTIONS AND ANY LISTED WARNINGS IN REGARDS TO PRODUCT USE.

INSTALLATION AND CONFIGURATION MANUAL
 Abrams Ultra Grill Lights

Specifications

- LED: 3W*12 Spilt/Dual
- LEDs per head : 12
- Voltage : 10-30VDC
- Flash patterns : 69
- Color : Color 1* Color 2



- Proper installation of this product requires the installer to have a good understanding of automotive electronics, systems and procedures.
- Failure to use specified installation parts or hardware will void the product warranty.
- For this product to operate at optimum efficiency, a good electrical connection to chassis ground must be made.
- It is recommend that these instructions be stored in a safe place and referred to when performing maintenance or reinstallation of this products.
- Do not install and/or operate this safety product unless you have read and understand the safety information contained in this manual.

This document provides all the necessary information to allow your product to be properly and safely installed. Before beginning the installation and operation of your new product, the installation technician and operator must read this manual completely.

Default

P52 Quad 75FPM is Factory Default.
 Phase Operation: Ph1= Phase 1 / Ph2=Phase 2
 Phase 1 (Ph1) flashes simultaneously with Ph1
 Phase 2 (Ph2) flashes simultaneously with Ph2

Operation

Apply BLUE to BLACK wire:
 -Less than 1 sec. for next pattern
 -Between 1-3 sec. for previous pattern
 -Between 3-5 sec. for Factory Default
 -More than 5 sec. for Last Pattern

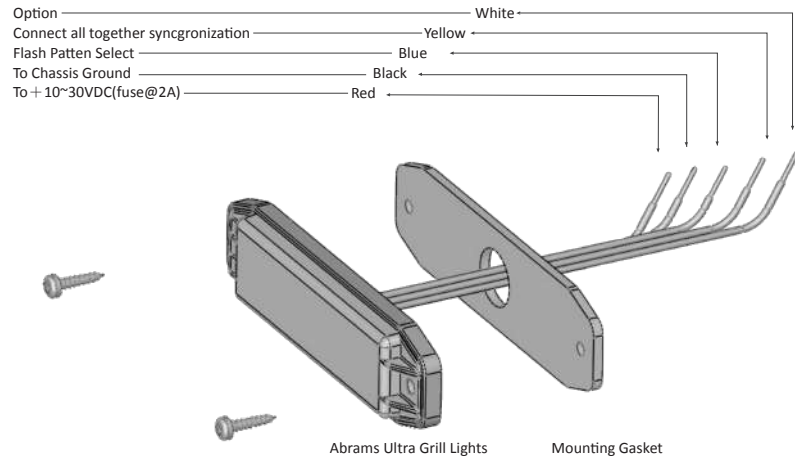
INSTALLATION AND CONFIGURATION MANUAL

Abrams Ultra Grill Lights

Apply WHITE TO RED (+) wire

- Stop/Turn/Brake/Tail Light Steady Burn patter

Mounting



Inspect the contents to be certain that the following items are included:

A. LIGHT HEAD *1 B. Screw *2 C. Manual *1 D. Mounting Gasket *1

Recommend Operation Environment

Ambient Temperature: -30 to 50 C

Relative Humidity: 10 to 85% , non-condensing

Wire

RED: Positive (need to add 2A Fuse)

BLACK: Negative

BLUE: Pattern Switch

YELLOW: Synchronized Function

WHITE: Stop/Turn/Brake/Tail Light Switch(Option)

*Maximum of 8 pcs can be synchronized

INSTALLATION AND CONFIGURATION MANUAL

Abrams Ultra Grill Lights

Trouble Shooting

The product has been factory tested and approved. If the functions of device fail, please check the following:

1. After connecting with the power supply, be sure that the power source end is joined in correct way. And then, make sure that there is no short-circuited power occurring.
2. Ensure Power switch is turned to "ON" position.

Pattern	LED Color 1 & Color 3 Red line	LED Color 2 & Color 4 White line	LED Color 1 & Color 3 LED Color 2 & Color 4 White & Red line	FLASH PATTERN	SYNH
	1-DEFAULT		1	Single 75FPM Ph1 Color 1 Synchronous Color 3	YES
	2		2	Single 75FPM Ph2 Color 1 Synchronous Color 3	YES
			3	Single 75FPM Ph1 Color 1 Alternately Color 4	YES
			4	Single 75FPM Ph2 Color 1 Alternately Color 4	YES
	1-Default		5	Single 75FPM Ph1 Color 2 Synchronous Color 4	YES
	2		6	Single 75FPM Ph2 Color 2 Synchronous Color 4	YES
3	3		7	Single 75FPM Ph1(Color 1 Synchronous Color 3) Alternately (Color 2 Synchronous Color 4)	YES
4	4		8	Single 75FPM Ph2(Color 1 Synchronous Color 3) Alternately (Color 2 Synchronous Color 4)	YES
5	5	5	9	Single 75FPM (Color 1 Alternately Color 2) Alternately (Color 3 Alternately Color 4)	YES
6			10	Single 375FPM Ph1 Color 1 Synchronous Color 3	YES
7			11	Single 375FPM Ph2 Color 1 Synchronous Color 3	YES
			12	Single 375FPM Ph1 Color 1 Alternately Color 4	YES
			13	Single 375FPM Ph2 Color 1 Alternately Color 4	YES
	6		14	Single 375FPM Ph1 Color 2 Synchronous Color 4	YES
	7		15	Single 375FPM Ph2 Color 2 Synchronous Color 4	YES
8	8		16	Single 375FPM Ph1 (Color 1 Synchronous Color 3) Alternately (Color 2 Synchronous Color 4)	YES
9	9		17	Single 375FPM Ph2 (Color 1 Synchronous Color 3) Alternately (Color 2 Synchronous Color 4)	YES
10	10		18	Single 375FPM (Color 1 Alternately Color 2) Alternately (Color 3 Alternately Color 4)	YES
11			19	Double 75FPM Ph1 Color 1 Synchronous Color 3	YES
12			20	Double 75FPM Ph2 Color 1 Synchronous Color 3	YES
			21	Double 75FPM Ph1 Color 1 Alternately Color 4	YES
			22	Double 75FPM Ph2 Color 1 Alternately Color 4	YES
	11		23	Double 75FPM Ph1 Color 2 Synchronous Color 4	YES
	12		24	Double 75FPM Ph2 Color 2 Synchronous Color 4	YES
13	13		25	Double 75FPM Ph1 (Color 1 Synchronous Color 3) Alternately (Color 2 Synchronous Color 4)	YES
14	14		26	Double 75FPM Ph2 (Color 1 Synchronous Color 3) Alternately (Color 2 Synchronous Color 4)	YES
15	15		27	Double 75FPM (Color 1 Alternately Color 2) Alternately (Color 3 Alternately Color 4)	YES
16			28	Double 120FPM Ph1 Color 1 Synchronous Color 3	YES
17			29	Double 120FPM Ph2 Color 1 Synchronous Color 3	YES
			30	Double 120FPM Ph1 Color 1 Alternately Color 4	YES
			31	Double 120FPM Ph2 Color 1 Alternately Color 4	YES
	16		32	Double 120FPM Ph1 Color 2 Synchronous Color 4	YES
	17		33	Double 120FPM Ph2 Color 2 Synchronous Color 4	YES
18	18		34	Double 120FPM Ph1 (Color 1 Synchronous Color 3) Alternately (Color 2 Synchronous Color 4)	YES
19	19		35	Double 120FPM Ph2 (Color 1 Synchronous Color 3) Alternately (Color 2 Synchronous Color 4)	YES
20	20		36	Double 120FPM (Color 1 Alternately Color 2) Alternately (Color 3 Alternately Color 4)	YES
21			37	Triple 75FPM Ph1 Color 1 Synchronous Color 3	YES
22			38	Triple 75FPM Ph2 Color 1 Synchronous Color 3	YES
			39	Triple 75FPM Ph1 Color 1 Alternately Color 4	YES
			40	Triple 75FPM Ph2 Color 1 Alternately Color 4	YES
	21		41	Triple 75FPM Ph1 Color 2 Synchronous Color 4	YES
	22		42	Triple 75FPM Ph2 Color 2 Synchronous Color 4	YES
23	23		43	Triple 75FPM Ph1 (Color 1 Synchronous Color 3) Alternately (Color 2 Synchronous Color 4)	YES
24	24		44	Triple 75FPM Ph2 (Color 1 Synchronous Color 3) Alternately (Color 2 Synchronous Color 4)	YES
25	25		45	Triple 75FPM (Color 1 Alternately Color 2) Alternately (Color 3 Alternately Color 4)	YES
26			46	Quad 75FPM Ph1 Color 1 Synchronous Color 3	YES
27			47	Quad 75FPM Ph2 Color 1 Synchronous Color 3	YES
			48	Quad 75FPM Ph1 Color 1 Alternately Color 4	YES
			49	Quad 75FPM Ph2 Color 1 Alternately Color 4	YES
	26		50	Quad 75FPM Ph1 Color 2 Synchronous Color 4	YES
	27		51	Quad 75FPM Ph2 Color 2 Synchronous Color 4	YES
28	28		52-Default	Quad 75FPM Ph1 (Color 1 Synchronous Color 3) Alternately (Color 2 Synchronous Color 4)	YES
29	29		53	Quad 75FPM Ph2 (Color 1 Synchronous Color 3) Alternately (Color 2 Synchronous Color 4)	YES
30	30		54	Quad 75FPM (Color 1 Alternately Color 2) Alternately (Color 3 Alternately Color 4)	YES
31			55	Quad 120FPM Ph1 Color 1 Synchronous Color 3	YES
32			56	Quad 120FPM Ph2 Color 1 Synchronous Color 3	YES
			57	Quad 120FPM Ph1 Color 1 Alternately Color 4	YES
			58	Quad 120FPM Ph2 Color 1 Alternately Color 4	YES
	31		59	Quad 120FPM Ph1 Color 2 Synchronous Color 4	YES
	32		60	Quad 120FPM Ph2 Color 2 Synchronous Color 4	YES
	33		61	Quad 120FPM Ph1 (Color 1 Synchronous Color 3) Alternately (Color 2 Synchronous Color 4)	YES
	34		62	Quad 120FPM Ph2 (Color 1 Synchronous Color 3) Alternately (Color 2 Synchronous Color 4)	YES
	35	35	63	Quad 120FPM (Color 1 Alternately Color 2) Alternately (Color 3 Alternately Color 4)	YES
8			64	Modulation (Color 1 Synchronous Color 3) Alternately (Color 2 Synchronous Color 4)	NO
9			65	2 Double, 2 Quad (Color 1 Synchronous Color 3) Alternately (Color 2 Synchronous Color 4)	NO
10			66	4 Single, 2 Triple (Color 1 Synchronous Color 3) Alternately (Color 2 Synchronous Color 4)	NO
11			67	1 Double, 1 Triple, 1 Quad (Color 1 Synchronous Color 3) Alternately (Color 2 Synchronous Color 4)	NO
	36		68	Steady burn-Color 1 & 3	NO
12		36	69	Steady burn-Color 2 & 4	NO